

# WYSZUKIWANKA-H



**harfa**



**hamak**



**hipopotam**



**helikopter**

E	M	P	F	M	T	C	V	A	C	W	U	R	M	P
C	U	H	E	L	I	K	O	P	T	E	R	D	R	A
E	B	T	Y	J	K	S	E	M	F	A	Z	H	B	D
R	H	U	H	U	L	A	J	N	O	G	A	U	C	R
W	I	S	Q	P	H	A	Z	P	F	J	E	Ś	A	L
R	P	N	I	H	N	O	P	A	U	V	G	T	J	P
T	O	T	X	I	J	R	B	A	P	M	E	A	C	T
G	P	S	R	E	A	H	A	M	A	K	N	W	X	U
M	O	H	K	N	Q	N	J	M	E	U	L	K	Y	S
R	T	R	D	A	I	D	U	E	R	M	A	A	G	Y
U	A	L	U	G	T	P	L	A	N	T	N	H	H	W
P	M	E	F	K	K	W	X	G	S	K	H	S	A	A
W	U	F	V	P	U	T	W	T	A	R	K	G	R	J
E	Y	H	E	R	B	A	T	A	O	L	R	P	F	Y
T	S	P	W	A	R	J	O	C	C	O	E	Y	A	R



**hulajnoga**



**huśtawka**



**hiena**

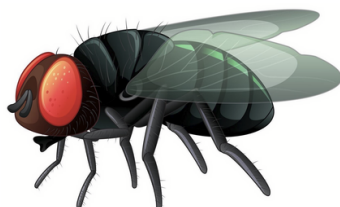


**herbata**

# WYSZUKIWANKA-CH



**choinka**



**mucha**



**chomik**

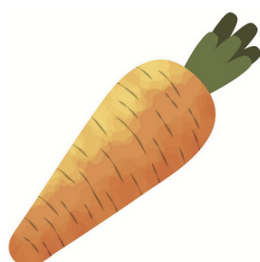


**chleb**

Q	S	D	X	F	A	N	V	D	F	C	X	A	W	K
X	C	V	Z	A	W	A	C	H	L	A	R	Z	I	M
N	H	Y	R	D	D	L	U	B	R	C	V	J	H	U
E	R	X	C	H	L	E	B	U	H	F	K	L	P	C
E	F	G	V	Y	U	J	Z	P	N	A	O	P	S	H
D	P	T	Y	H	N	T	Y	V	P	R	G	T	J	A
V	C	H	O	M	I	K	P	A	K	T	T	C	R	D
G	R	S	J	E	A	G	O	K	A	U	O	H	X	M
C	B	R	S	N	W	Z	J	U	Q	C	T	O	Y	S
D	R	R	D	L	J	G	O	C	R	H	A	I	E	F
O	E	A	Q	R	C	B	K	H	Z	W	M	N	H	W
N	M	I	U	G	B	M	W	N	V	R	M	K	S	C
Y	E	W	X	C	U	T	M	I	O	E	Y	A	P	I
M	A	R	C	H	E	W	K	A	G	L	R	N	V	C
T	X	P	C	A	Q	V	U	C	T	P	O	Y	D	D



**kuchnia**



**marchewka**



**wachlarz**



**fartuch**